



**Northern
Virginia Chapter**

Aunt Kitty

**Azalea Society
of America**

Annual Meeting

6 Dec 2020



Agenda

- Welcome
- Calendar for 2021
- Election of officers (vote)
- Treasurer's Report
- Fundraising Report
- Proposed Budget (vote)
- Proposed Donations (vote)
- Presentation – Bowie Mill Azaleas
- Conclusion



Elizabeth Ann Rowe

Date	Event	Organization	Location
Mar 21 1:30-4pm	Chapter Meeting with Speaker	NV-ASA	Virtual or Kirkwood Presbyterian Church Springfield, VA
April 15-18	ASA "Unconventional Convention"	ASA	Charlotte, NC
April 24-25	Member Garden Visits	NV-ASA	Various
April 24 and/or 25	Meadowlark Gardens Plant Sale	NV-ASA	Meadowlark Gardens, Vienna, VA
May 1 and/or 2	Meadowlark Gardens Plant Sale	NV-ASA	Meadowlark Gardens, Vienna, VA
May 8	Ayr Hill Garden Club Plant Sale		Vienna
May 15 9 am – 3 pm (Setup May 14)	Green Spring Gardens Plant Sale (possibility of cancellation)	Green Spring Gardens	Green Spring Gardens, Alexandria, VA
May 16	White's Nursery Open House	White's Nursery	White's Nursery, Germantown, MD
June 3-6	ARS Convention	ARS	Nova Scotia, Canada
July 11 1:30 – 4:30 pm	Cutting Exchange	NV-ASA	Kirkwood Presbyterian Church Springfield, VA
Sep 25 1 – 4:30 pm	Fall Plant Sale	NV-ASA	Kirkwood Presbyterian Church Springfield, VA
Oct 24 1:30 – 4:30 pm	Fall Meeting with speaker	NV-ASA	Kirkwood Presbyterian Church Springfield, VA
Oct 24 4:30 – 6 pm	Executive Committee Meeting	NV-ASA	Kirkwood Presbyterian Church Springfield, VA
Dec 5 1 – 4:30	Holiday Social/Annual Meeting	NV-ASA	TBD

Calendar 2021

Election of Officers

Slate of officers for 2021

- President – Rick Bauer
- Vice President – Diane Marcus
- Treasurer – Paul Beck
- Secretary – Joanne Neckel

Treasurer's Report

Treasurer's Report, January 1, 2020 – Dec 6, 2020

- **Balance as of 1/1/2020:**

• FVCB Savings	\$14,821.51
• FVCB 5-yr CD	\$10,669.17
• FVCB Checking	\$3,166.50
• Total	\$28,657.18

- **Balance as of 12/6/2020:**

• FVCB Savings	\$15,851.70
• FVCB 2-yr CD	\$10,856.06
• FVCB Checking	\$5,457.97
• Total	\$32,165.73*

*Outstanding obligations of \$7,185 (NBG - \$1,230, Meadowlark signage - \$2,955, 2023 Convention, \$3,000).

2020 Plant Sale Summary

Sale	Plants	Gross	Fees	Plant Cost	Net
2020 Member Sales	398	\$6,224.00	\$0.00	\$56.75	\$6,167.25
2020 Bonsai Members Sale	19	\$247.00	\$0.00	\$0.00	\$247.00
2020 Fall Sale	79	\$1,068.00	\$0.00	\$0.00	\$1,068.00
2020 Meadowlark	29	\$457.00	\$68.55	\$9.00	\$379.45
Total	525	\$7,996.00	\$68.55	\$65.75	\$7,861.70

Donation of Plants 2020

Donation To	Number of Plants	Group	Comment
Jenkins Arboretum, Pennsylvania	117	Holly Springs	For HS Legacy Garden
London Town Garden, Maryland	47	Marshy Point	14 to be used in their fundraising auction to support the Marshy Point collection

Fundraising Report

Category	2017 Actual	2018 Actual	2019 Actual	2020 Actual	2020 Budget	2021 Budget
INCOME	\$11,674.67	\$10,922.26	\$11,922.80	\$8,817.10	\$13,000.00	\$10,725.00
Savings Withdraw					\$2,500.00	
Interest Income	\$174.67	\$229.26	\$208.80	\$224.10	\$175.00	\$200.00
Dues	\$560.00	\$555.00	\$515.00	\$0.00	\$525.00	\$525.00
Donations	\$270.00	\$136.00	\$30.00	\$597.00	\$0.00	\$0.00
Sales	\$10,670.00	\$10,002.00	\$11,169.00	\$7,996.00	\$9,800.00	\$10,000.00
Auction	\$5,057.00	\$5,538.00	\$5,667.00	\$1,068.00	\$5,000.00	\$1,000.00
Green Spring	\$1,869.00	\$0.00	\$660.00	\$0.00	\$800.00	\$1,000.00
Bonsai Society	\$709.00	\$1,017.00	\$1,114.00	\$247.00	\$1,000.00	\$1,000.00
Member Only	\$2,602.00	\$2,422.00	\$2,126.00	\$6,224.00	\$2,000.00	\$5,000.00
Meadowlark				\$457.00		\$1,000.00
Ayr Hill	\$0.00	\$1,025.00	\$661.00	\$0.00	\$1,000.00	\$1,000.00
Robbinsville	\$433.00	\$0.00	\$795.00	\$0.00	\$0.00	\$0.00
Convention			\$146.00			
EXPENSES	\$8,074.47	\$9,485.61	\$13,803.15	\$6,253.33	\$13,000.00	\$10,725.00
Convention	\$0.00	\$1,000.00	\$1,000.00	\$1,000.00	\$1,000.00	\$1,000.00
Administrative	\$532.11	\$497.71	\$308.08	\$547.87	\$450.00	\$475.00
Mailings	\$0.00	\$0.00	\$0.00	\$10.90	\$0.00	\$0.00
Supplies	\$12.39	\$0.00	\$0.00	\$0.00	\$50.00	\$50.00
Equipment	\$0.00	\$240.42	\$0.00	\$0.00	\$50.00	\$50.00
Website	\$387.78	\$146.61	\$184.66	\$464.52	\$200.00	\$200.00
CC/Bank Fees	\$131.94	\$110.68	\$123.42	\$72.45	\$150.00	\$150.00
Membership	\$0.00	\$0.00	\$0.00	\$0.00	\$0.00	\$25.00
Clipper	\$326.26	\$501.46	\$119.35	\$55.00	\$600.00	\$250.00
Donations	\$3,500.00	\$4,315.00	\$4,500.00	\$0.00	\$4,000.00	\$4,000.00
Hospitality	\$202.03	\$157.55	\$193.38	\$26.88	\$250.00	\$250.00
Insurance	\$477.00	\$477.00	\$477.00	\$477.00	\$480.00	\$480.00
Programs	\$0.00	\$150.00	\$250.00	\$0.00	\$500.00	\$500.00
Honorarium	\$0.00	\$150.00	\$250.00	\$0.00	\$500.00	\$500.00
Auction	\$533.53	\$540.50	\$531.25	\$9.53	\$270.00	\$270.00
Flyers, Photos	\$37.28	\$0.00	\$0.00	\$9.53	\$70.00	\$70.00
Purchases	\$296.25	\$340.50	\$331.25	\$0.00	\$0.00	\$0.00
Room Rental	\$200.00	\$200.00	\$200.00	\$0.00	\$200.00	\$200.00
Ayr Hill	\$0.00	\$51.50	\$55.00	\$0.00	\$200.00	\$200.00
Bonsai Society	\$0.00	\$45.00	\$130.50	\$0.00	\$0.00	\$0.00
Green Spring	\$436.85	\$65.00	\$204.00	\$0.00	\$300.00	\$150.00
Purchases	\$156.50	\$0.00	\$105.00	\$0.00	\$0.00	\$0.00
Commission	\$280.35	\$65.00	\$99.00	\$0.00	\$300.00	\$150.00
Meadowlark				\$68.55	\$0.00	\$0.00
Commission				\$68.55	\$0.00	\$150.00
Member Sales	\$457.50	\$122.00	\$171.00	\$56.75	\$0.00	\$0.00
Other Sales	\$110.00	\$0.00	\$0.00	\$0.00	\$150.00	\$150.00
Purchases	\$110.00	\$0.00	\$0.00	\$0.00	\$150.00	\$150.00
Propagation	\$1,609.19	\$2,668.64	\$5,863.59	\$4,011.75	\$4,800.00	\$3,000.00
Supplies	\$1,609.19	\$2,443.64	\$5,034.59	\$3,003.75	\$3,000.00	\$3,000.00
Purchases	\$0.00	\$225.00	\$829.00	\$1,008.00	\$1,800.00	\$0.00



Budget 2021

Proposed Donations

The Executive Committee recommends the following donations for 2020:

- \$2500 to Meadowlark Gardens to repair the irrigation system at the Klimavicz Legacy Garden
- \$1000 to the Azalea Society of America.
 - If approved, recommend it be done in memory of Robert Thau

A close-up photograph of several white Bowie Mill Azalea flowers. The flowers are large, multi-petaled, and have a slightly ruffled appearance. They are set against a background of dark green, glossy leaves. The lighting is bright, highlighting the texture of the petals and the vibrant green of the foliage.

Bowie Mill Azaleas

Presentation by
Rick Bauer

Legacy Project

- Started in 2013 by the Northern Virginia Chapter.
- Purpose was to “Help ensure the continuation of knowledge of azalea hybridizers and their plants and maintain true specimens of their cultivars.”
- The project became a society project in 2017.
- Initially it consisted of four hybrid groups. In 2020 it has 21 groups
- The “Bowie Mill” azaleas are one of the Legacy hybrid groups.

Bowie Mill Azaleas

Buck Clagett - hybridizer

- Buck Clagett lives in Derwood, MD (zone 7a/6b) and is the hybridizer of the Bowie Mill azaleas.
- Both sides of his family had an interest in horticulture.
- His Aunt Dorothy knew Dr. Wilson from the USDA, a friend of Ben Morrison from whom she received a number of original Glenn Dales.
- Buck started a collection with Hahn's Red (Kurume), Kiesha Ambrosia (Glenn Dale) and Martha Hitchcock (Glenn Dale) from Lyon's nursery.
- He later obtained some Gables from a Hyattsville nursery and Gold Cups from Nuccio's in California.



Buck Clagett – photo from
March 2015 *Azalea Clipper*

All photos by Buck Clagett unless otherwise noted.

Buck Clagett - hybridizer

- He became interested in azaleas in the early '60's and started a collection from various nurseries in 1963.
- In 1975 he started to grow azaleas from seed.
- In 1978, he made his first attempts at hybridizing.
- He named his hybrids "Bowie Mill" after the road he lives on in Derwood, MD.
- Buck was a friend of George Harding and Bob Stelloh and was involved with them and others in the founding of the Azalea Society of America in 1978.



Buck Clagett and granddaughter Elizabeth Ann –

Photo from Sept 2014 *Azalea Clipper*

Hybridization Goals

- Create varieties similar to what he had seen in containers and those grown in warmer climates
- Produce flowers with more petals and more colors than were available
- Blooms with ruffles, doubles and lots of variegation
- Smaller varieties for small planting situations and urban gardens
- At one point, considered pursuing the elusive yellow evergreen, but never worked on it.



Dink

Hybridization Goals – cont'd

- Early on he obtained a collection of Mossholder-Bristow (AKA Gold Cup) azaleas.
- Only “Caprice” and “Easter Parade” turned out to be hardy in his area (Zone 6b)
- This provided the incentive for the goal to develop azaleas which looked like Gold Cups, but which were hardy in Zone 6b.



Caprice – photo Carolyn Beck

Varieties

ST-1A, ST-4, CB-1A

All double, all variegated red-on-white, semi-hardy container plants, which I obtained from a friend. I cannot authenticate the background on these plants. I have heard from a reliable source that these plants were part of a University of Maryland plant study that were rescued from a discard pile by an ASA member

Aunt Jim

- 'Corsage' (Gable) seedling x unknown
- Flower: 2 inch single white in center to moderate purplish pink
- Flower buds are deep purplish pink
- Plant habit: about half again high as wide, only slightly open
- Bloom time – May 15-30
- Named after one of his father's sisters
- Hardy to – 15 degrees F



Aunt Jim

Inch

- 'Alexander' (North Tisbury) x an unknown *R. indicum* hybrid (may be 'Issho-no-haru')
- Flower: 2-1/4 inches across, single, white, with an abundance of stripes, flakes, and sectors of bright deep purplish pink (RHS 67C) Center has showy chartreuse highlights
- Plant habit: mounding, dense, very small—a 12-year-old plant is just 12 inches tall by 40 inches wide (one inch per year)
- Bloom time: late June into July
- Hardy to at least: -15 degrees
- Named after his middle daughter Stacey Lynn's nickname – he thought it fit!



Inch

John Francis

- 'Hino-crimson' (Kurume) x unknown seedling
- Flower: 1-3/4 inches across, hose-in-hose, strong reddish purple (RHS 70B), very floriferous.
- Foliage: outstanding, shiny, medium green, very round, much like 'Glacier' but with more color, turns purple to bronze in the fall, looks good all year regardless of the weather
- Plant Habit: as wide as tall, very dense growth, a 20-year-old plant is 40 inches wide by 5 feet tall.
- Bloom time: early to mid-May
- Named for his Uncle Jack
- Hardy to – 12 degrees F



John Francis

Layne Ashlee

- 'Christina' (Vuykiana) x 'Shinnyo-no-tsuki' (Satsuki)
- Bloom is 2-3/4 inches across, double (12-14 petals)
- The color is vivid reddish orange (RHS 43B) with centers and blotches of light pink (RHS 39D).
- Variegations do not appear until rooted cuttings are three to four years old
- Plant Habit: moderately dense and slow growing; a 10-year-old plant is still only 2 feet tall
- Bloom time: mid to late June
- Hardy to -8 degrees
- Named for his granddaughter
- Flower is one of his favorites



Layne Ashlee

Mary's House

- Cross and seedling number not available
- Flower: 2 $\frac{3}{4}$ saucer shaped double flower
- Pink in color (RHS 62B washed to 62D on the edges)
- Pistil is showy bright orange red
- Foliage is dark green 1 $\frac{1}{2}$ by $\frac{1}{2}$ inches and very dense
- Growth habit is compact – 15 inches in 10 years
- Blooms in late May
- Planted by his youngest daughter Mary's house



Mary's House

Miss Curlicue

- ['Elsie Lee' (Shammarello) x 'Dorsett' (Kaempferi)] x 'Helen Curtis' (Shammarello)
- 1 ¾ " double flower with irregular edges of dark red to strong red to white in the center to bright chartreuse in the throat
- blotch is showy, made up of bright purple and ochre markings and confined mostly to the top lobe
- Foliage is small, medium green, and shiny
- Plant habit is dense, and as wide, as tall
- blooms in April and is a very prolific bloomer
- Hardy to -2 degrees F
- Named for his granddaughter Lauren Spelman
- Flower is one of his favorites



Miss Curlicue

Patrick William

- 'Pixie' (Glenn Dale) x unnamed hybrid ST-4
- Bloom is 2-3/4 inches across, hose-in-hose, very ruffled, very floriferous
- The color is an elegant, creamy white with an outstanding chartreuse blotch on the three upper lobes
- leaves are very dark green, 1 inch long, with a very fine pubescence on the upper surface
- Plant Habit: very dense - the 10-year-old plant is 30 inches by 30 inches.
- Bloom time: late May
- Hardy to – 8 degrees F
- Won Best in Show at the 1998 Brookside Gardens Chapter flower show
- Named for his grandson



Patrick William

Richard Montgomery - 1956

- Rosette (Glenn Dale) x Mania (Bowie Mill)
- 1 $\frac{3}{4}$ semi-double to fully double flower
- Deep red (RHS 45C). Dark red blotch (RHS 53A) in the upper lobes
- Leave are very dark green and narrow (1/4" by $\frac{3}{4}$ "")
- Plant is small with moderately upright and open habit.
- Blooms mid to late May
- Dedicated to his high school alumni group
- Hardy to at least -12 degrees F



Richard Montgomery 1956

Ruthy's Red

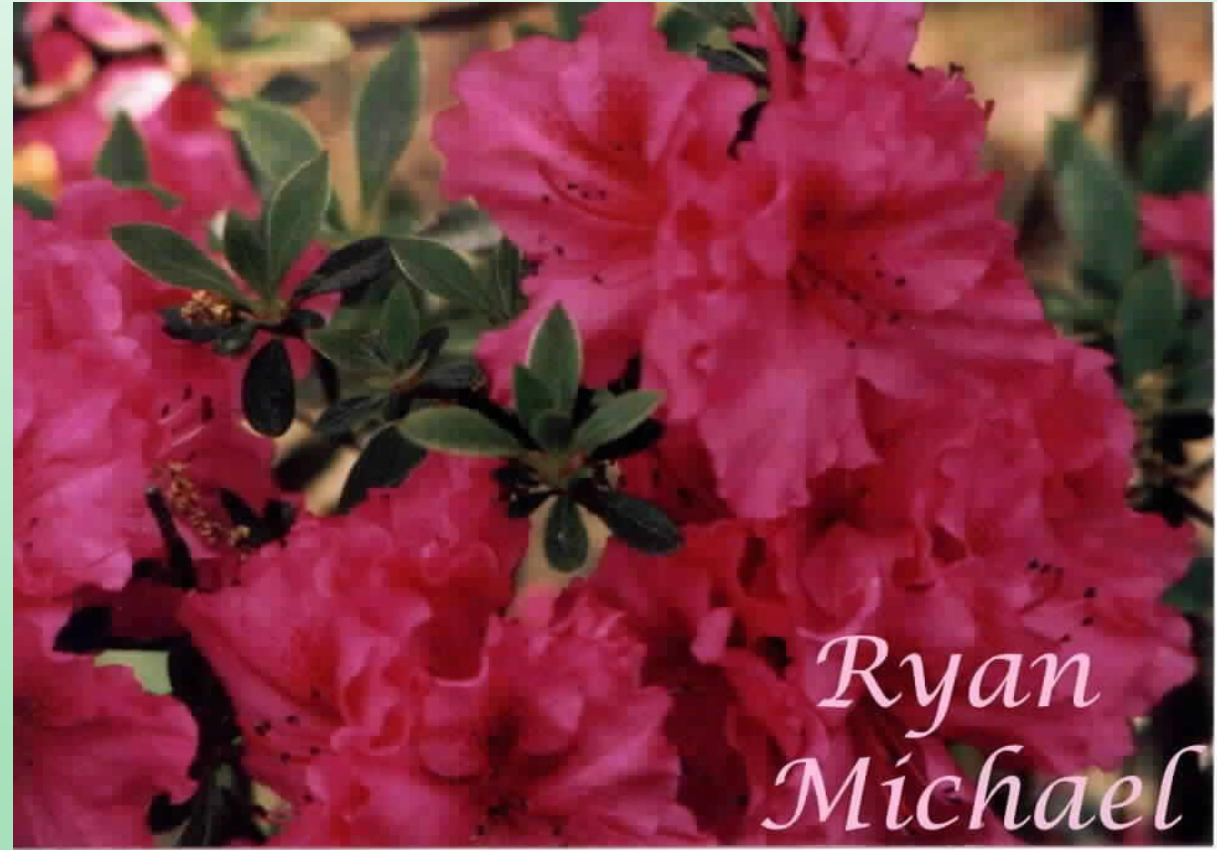
- 'Christina' (Vuykiana) x 'Shinnyo-no-tsuki' (Satsuki)
- Bloom is hose-in-hose, 2-3/4 inches across, with ruffled edges, strong red (RHS 41B) with rare centers of pale pink
- Foliage: leaves are 1 inch long, medium green and shiny
- Plant habit: somewhat open, as wide as tall; a 5-year-old cutting grown plant is 15 inches by 19 inches
- Bloom time: mid-June
- Named for one of his mother's sisters
- Hardy to at least -8 degrees F



Ruthy's Red

Ryan Michael

- 'Pixie' (Glenn Dale) x unnamed hybrid ST-4
- Flower: 2-3/4 inches across, hose-in-hose, very ruffled, very floriferous; color is deep purplish pink (RHS 68A) with very showy rose dots in the blotch
- Foliage: leaves are 1-1/4 inches long, narrow, and medium green.
- Plant habit: open, more tall than wide.
- Bloom time: late May
- Named after his oldest grandson
- Hardy to -8 degrees



Ryan Michael

Samantha Michelle

- 'Christina' (Vuykiana) x 'Shinnyo-no-tsuki' (Satsuki)
- Bloom is 2-3/4 inches across, double, hose-in-hose (15-17 petals), ruffled, deep purplish pink (RHS 73D) with very pale purple (RHS 73D) centers of varying size in every bloom
- Some have light pink to edges of the bloom
- Foliage: leaves are small, roundish, and very dark green
- Plant habit: dense, smallish
- Bloom time: late June
- Named for his granddaughter Samantha Clagett
- Hardy to at least -8 degrees F



Samantha Michelle

Tissie

- 'White Jade' (Back Acres) x 'Tasago' (2-inch purple flowers with white centers)
- Flower: 3-1/4 inches across, hose-in-hose, strong purple (RHS 77A to B), with conspicuous strong purplish red (RHS 71B) spotting on dorsal lobes, with wavy margins
- Foliage: 1-1/2 inches long, elliptic, dark green; holds up well in early spring when most foliage is at its worst
- Plant habit: somewhat open, but generally as wide as it is tall; a 20-year-old plant is 4 feet by 4 feet
- Bloom time: mid-to late June
- Named for one of his father's sisters
- Hardy to at least -15 degrees F



Tissie

Koromo Shikibu x unknown *R. indicum*



Koromo Shikibu
Photo Carolyn Beck

Unknown *R. Indicum*

A ruffled, rose red semi-double, with white variegations in some blooms. A container plant given to his mother-in-law for Mother's Day, 1984.

Aunt Kitty

- 'Koromo Shikibu' x an unknown *R. indicum*
- Bloom is white hose in hose
- Plant habit - as wide as it is tall
- Bloom time - late May
- Hardy to -12 degrees F
- Named after one of his mother's sisters



Aunt Kitty

Dorothy King

- 'Koromo Shikibu' x unnamed *R. indicum* hybrid
- Flower 2 ½ in hose-in-hose
- Strong to vivid purplish pink (RHS 67A to B)
- Plant Habit – as wide as it is tall
- Bloom time - mid-May
- Hardy to -10 degrees F
- Named for one of his father's sisters



Dorothy King

Tina's Whorled

- 'Koromo Shikibu' x an unknown *R. indicum* hybrid (ruffled, semi-double flowers, rose red with white variegation)
- Flower: 3 inches across, strong reddish purple (RHS 78B)
- Individual petals do not touch, but are more elliptic than strap-like, giving a whorled effect to the flower
- Mixed with new foliage that is approximately the same size, this gives the appearance of two colors of flower petals
- Foliage: large, 2 inches long by $\frac{3}{4}$ inch, new growth even larger, about the size of the flower petals
- Growth habit: as wide as tall, open; the original plant is 30 inches by 30 inches
- Bloom time - May 15-30
- Named for his wife
- Hardy to -15 degrees F



Tina's Whorled

Moonbeam (Glenn Dale) X CB 1-A Crosses



Photo Dan Krabill

CB 1-A

Double, all variegated red-on-white, semi-hardy container plants, obtained from a friend. Cannot authenticate the background on these plants.

A reliable source said these plants were part of a University of Maryland plant study that were rescued from a discard pile by an ASA member.

Denise Ann

- 'Moonbeam' (Glenn Dale) x unnamed hybrid CB-1A
- Bloom is ruffled 3 ¼ in across white double hose-in-hose.
- Center has showy chartreuse highlights
- Plant Habit – moderately open
- Bloom time: late May
- Hardy to -8 degrees F
- Named for his oldest daughter



Denise Ann

Granny Cee

- 'Moonbeam' (Glenn Dale) x unnamed hybrid CB-1A
- Very open flower 3 inches across hose-in-hose
- Very ruffled white with moderate deep purplish pink(RHS 73A) striping
- Plant Habit – original plant is 2 feet wide by 3 feet tall
- Bloom time: late May or early June
- Hardy to -8 degrees F
- Named after the nickname for his paternal grandmother



Granny Cee

Marybeth

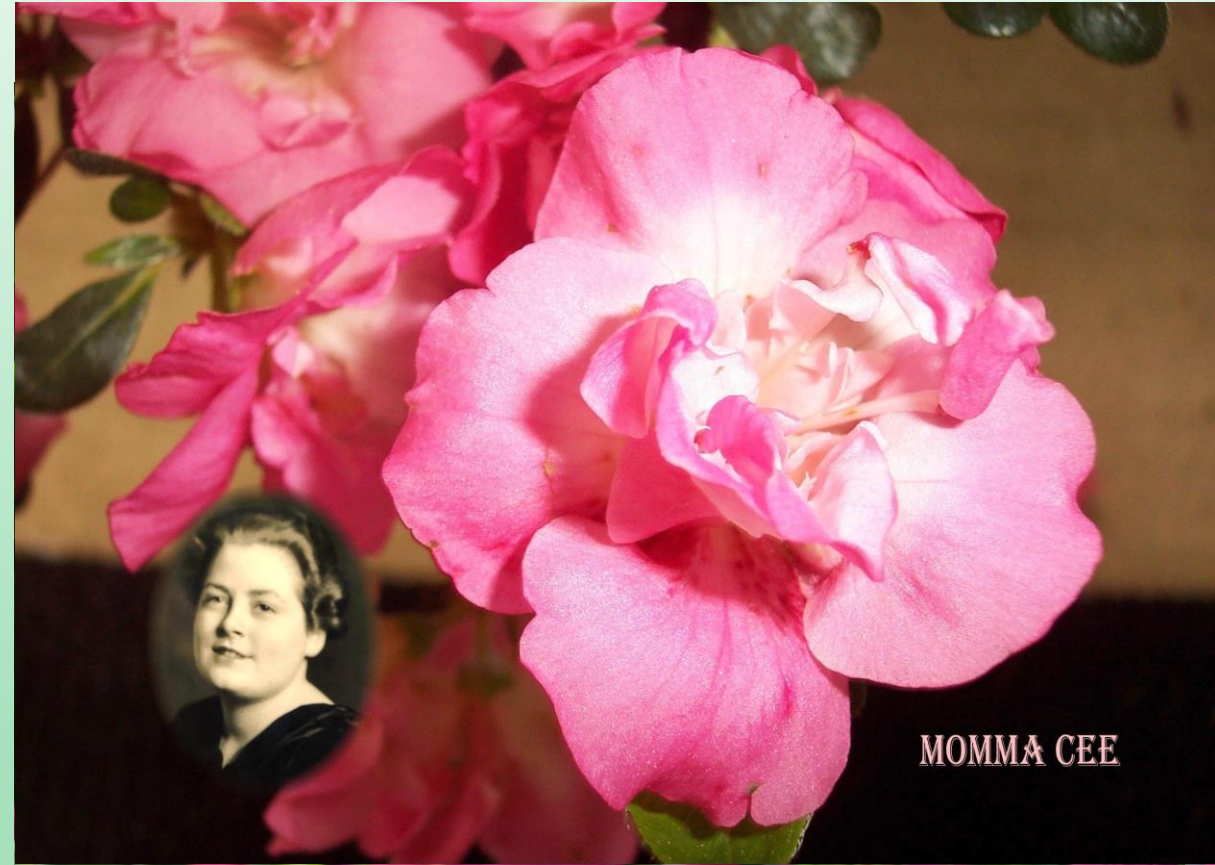
- 'Moonbeam' x unnamed hybrid CB-1A
- Flower: 3 inches across, on young plants strong reddish purple (RHS 70B) throughout
- After a few years, they develop a very pale center with RHS 70B margins, and with varying degrees of light pink in the center of the petaloid stamens
- Foliage: leaves are medium green, 1-1/4 inches long
- Plant Habit – horizontal; the original plant is 36 inches wide by 12 inches tall.
- Bloom time: late May
- Named for his youngest daughter
- Hardy to at least -8 degrees F



Marybeth

Mama Cee

- 'Moonbeam' (Glenn Dale) x unnamed hybrid CB-1A
- Bloom is bloom is 2-1/2 inches across
- The color is vivid reddish orange (RHS 43B) with centers and blotches of light pink (RHS 39D).
- Leaves are dark green, shiny, and very round
- Plant Habit – open and horizontal
- Bloom time: late May
- Named for his mother
- Hardy to -8 degrees F



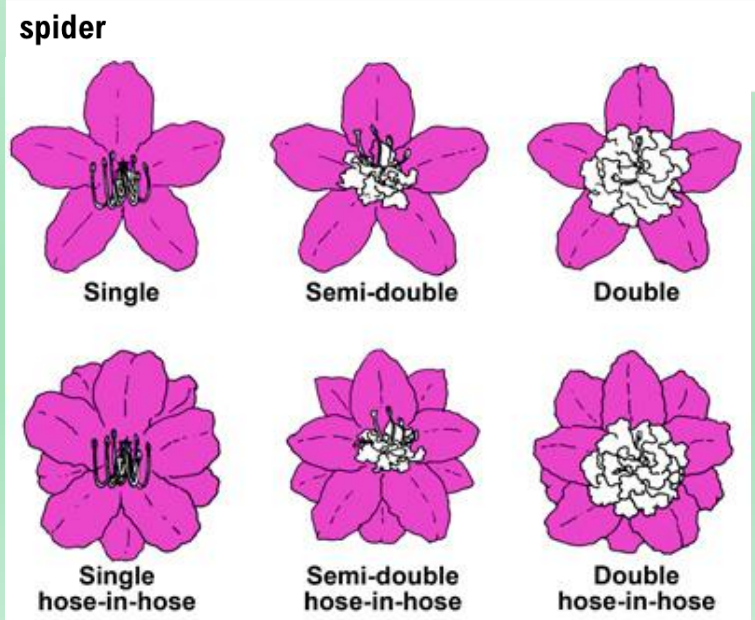
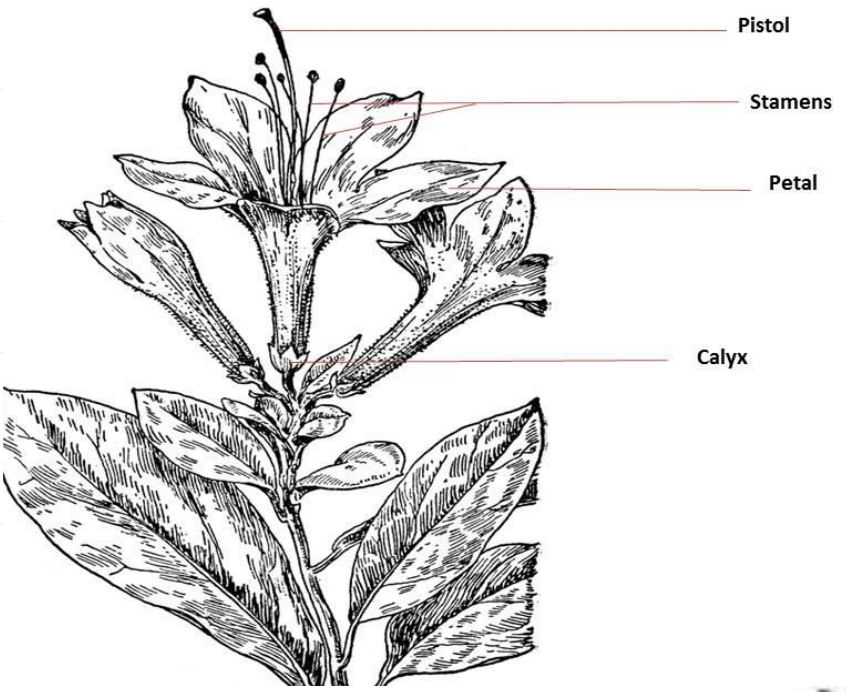
Mama Cee

Conclusion

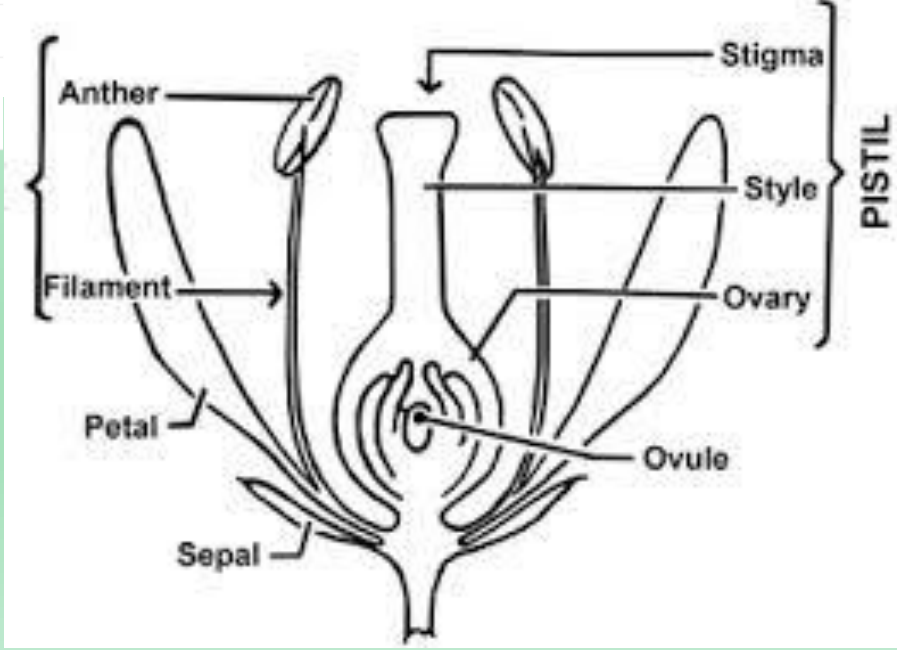
- The Bowie Mill azaleas are a beautiful variety of azaleas developed in the Middle Atlantic area.
- They are one of the varieties of azaleas in the Azalea Society of America's Legacy Project.
- The Northern Virginia Chapter and others are perpetuating the legacy of this group through propagation and sales to the public.
- Most of the varieties are available at White's Nursery in Germantown, MD
- We need a Legacy Lead for this hybrid group. If you have any questions about this position or the Legacy Project, contact Rick Bauer at rickbauer@cox.net.

Questions?

single	5 (typically) to 7 petals fused at the base, with a visible green calyx, and with a visible pistil and 5 (typically) to 10 visible stamens
hose-in-hose	the calyx is transformed into petals, such that it appears as two similar corollas, one inside the other and rotated so that all the petals are visible
semi-double	some stamens have been transformed completely or partially into petals, usually smaller than the outside corolla petals, and commonly contorted
semi-double hose-in-hose	transformed calyx and partially transformed stamens, combining the previous two forms
double	all the stamens have been transformed completely into petals, which may be similar in size and shape to the corolla petals, and the pistil may have been transformed, but the calyx has not been transformed
double hose-in-hose	the stamens and calyx have all been transformed into petals



the petals are narrow and straplike rather than being fused at the base



<https://www.azaleas.org/azalea-flowers/>

Dottie Ann

- 'Asahizaru' x CB-10
- Flower 2 ½ in single with distinct bicolor patterns
- Reddish purple border with RHS 75C light purple center.
- Flower 2-RHS 51A orange red border with a RHS 75C light purple center
- Foliage: leaves are small, medium green and glossy
- Plant Habit – very small, as wide as it is tall
- Bloom time: mid June
- Named for one his Aunt Dottie



Dottie Ann